

SMART SHADE

THE MULTI-SEASON
LIVING SPACE



SMART SHADE

THE MULTI-SEASON LIVING SPACE

LIGHT AND HEAT MANAGEMENT

SMART SHADE, designed for private or professional use, offers functionalities to effectively control the natural light inputs by optimizing shading and ventilation accordingly to the seasons.

A VARIETY OF CONFIGURATION

SMART SHADE allows to regulate the sunshine and the thermal comfort, thus enhancing the buildings value and offering multiple possibilities to take full advantage of the outdoor spaces: terrace, garden, swimming pool, spa, courtyard, passageways ...

SMART SHADE is adaptable to all installation configurations and constraints of implantation while offering a real multi-season living space.

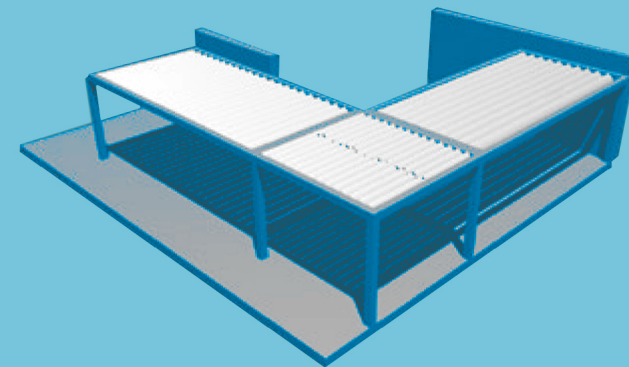
STRAIGHT AND CLEAN LINES

On the aesthetic side, **SMART SHADE** offers a sleek design with straight lines and elegant finishes. Combined with numerous customization accessories, this extension of the building will bring to its occupants comfort and conviviality.

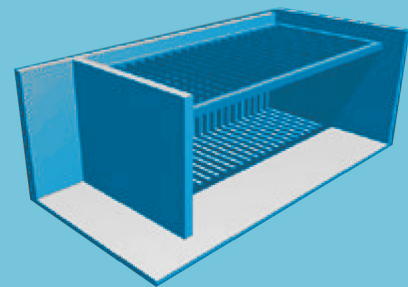


SMART SHADE

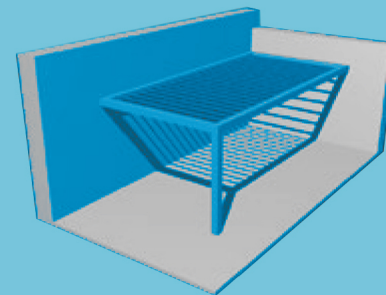
KEY FEATURES AND INNOVATIONS



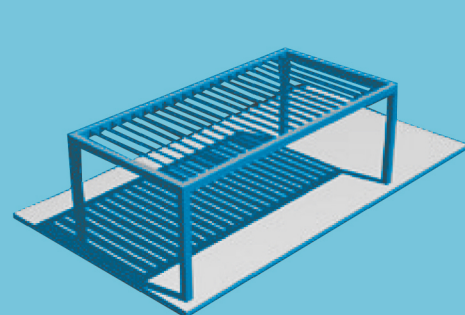
Combination



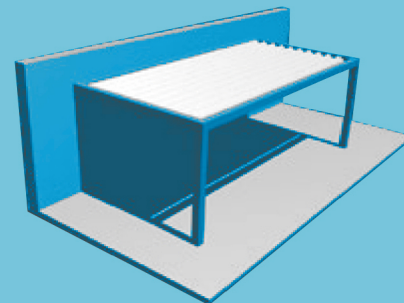
Between Walls



In angle



Isolated



Leaned on the wall

EASE OF INSTALLATION AND MANUFACTURING

- 100% of the cuts are straight
- Blade driving profile pre-drilled
- All mounting brackets are made of powder-coated stainless steel
- Screw assembly
- Removable louvers are independently

DESIGN AND AESTHETICS

- Elegant design ideal for contemporary and more traditional constructions
- Wide choice of colors **SMART SHADE** and possibility of having a different colour for the structure
- Elegant finishes without visible screws
- Rainwater discharged in post

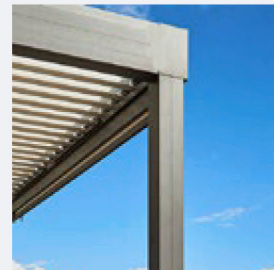
COMFORT OF USE

- Adaptable to all configurations and installation constraints
- Thermal optimization from shading and ventilation in the summer, as well as the solar contributions management in winter, a real barrier to rain
- Silent movement of the blades
- Blades installation in parallel or perpendicular to the facade enhancing the solar contributions
- Control centre allowing to combine multiple functions on the same remote control (blades, LED lighting, blinds ..)

FINE DESIGN AND ENERGY SAVING

CLEAN LINES AND NEAT FINISHES

- Straight and clean lines for a harmonious result
- No visible screws on the whole structure
- Additional profile positioned on top of the blades to hide the movement of the upper part



Flush post



Offset post

ENERGY REQUIREMENTS MONITORED

The installation of **SMART SHADE** contributes to reduce energy requirements, especially in summer. Indeed, it lowers the air conditioning needs for adjoining rooms, while protecting façades and outdoor furniture from sun and rain alteration. In winter, it allows to optimize the light and heat inputs.



COMFORT AND SAFETY ON A DAILY BASIS

EASY HANDLING

- Soft and silent blade movement
- Integrated motorisation in the upper part of the structure
- Blade orientation up to 130 °
- Handling of the blades by remote control
- Waterproof roof in closed position

COMPLEMENTS

- Motorized Stores
- LED lighting or spotlights

RELIABILITY OF ELEMENTS

- Motor with stainless steel components, resistant to rain and dust
- Exceptional durability with minimal maintenance (aluminium standard)
- Motorisation tested with more than 20,000 cycles
- Fixing on wall or on terrace using stainless steel plates

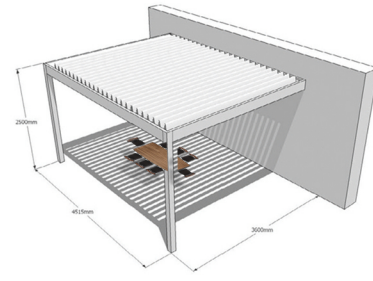


CONFIGURATION

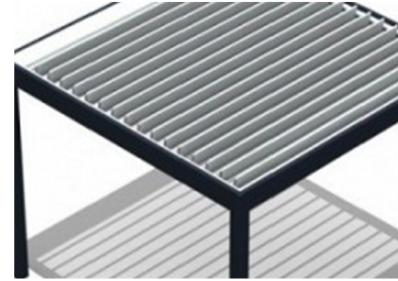
SMART SHADE CUSTOMIZED IN 5 STEPS



1. Model
Creating the model, configuring the structure and posts.



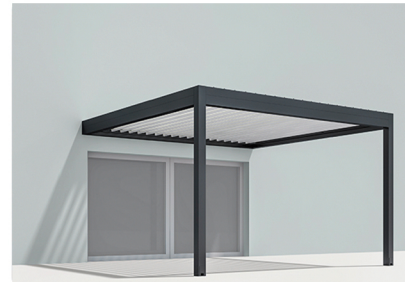
2. Customization
You can simulate location of accessories at desired locations.



3. Blades
Choice of blades types (flat or curved), orientation in relation to the facade and in the open or closed position.



4. Colours
The entire colour palette available. It is possible to do the blades with a different colour than the structure.



5. Visualization
Download a photo and design in 3D the pergola to position it ideally to the construction as realistic to possible.



FINISHES AND COLOURS

A wide range of finishes and colours is available to meet individual project requirements, enhancing existing buildings and offering architects and designers greater design freedom:

